

KE-8000 Series

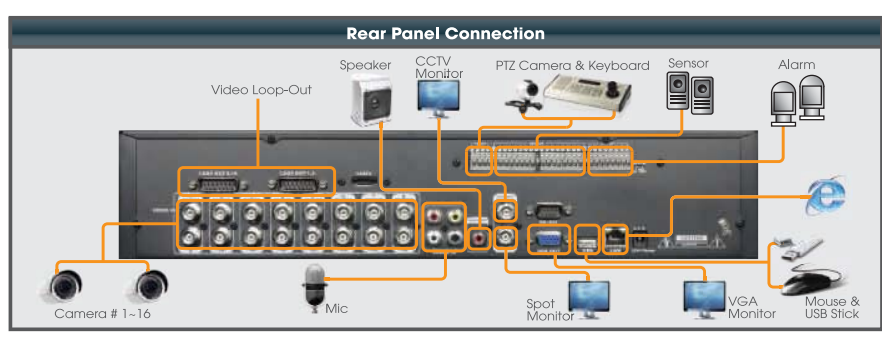
Empowered High-End DVR up to 8TB of Internal HDD

- H.264 Codec
- 4 & 8 & 16 Ch Video
- Up to 400/480 fps Recording at CIF
- 4 Ch DVR : 1.5U Height Case
8 & 16 Ch DVR : 2U Height Case



DVR Main Features

- **Automatic Upgrade of DVR Firmware & Remote Software**
Specially-designed algorithm is constantly checking the latest version of DVR firmware and remote software on FTP server. Once found, user is alerted to upgrade the system just by one mouse-click.
- **HDD Health Check**
Constant HDD health check for "Capacity, Bad Sector, Life Time (Used Period) and Temperature" and warning message if any.
- **Quick Setup**
User can designate "Desired Recording Period" based on the capacity of HDD installed.
- **Quick Backup**
Just press "ENTER" button to execute Quick Backup under playback mode.
- **Emergency Recording**
DVR instantly starts recording for all channels up to maximum fps when user press the "INSTANT RECORDING" button.
- **HELP Message**
Just click HELP icon, then pop-up window will show you technical tips.



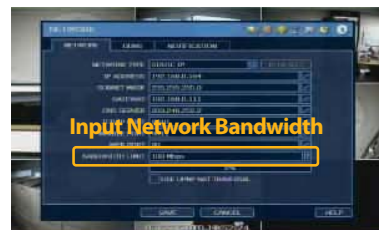
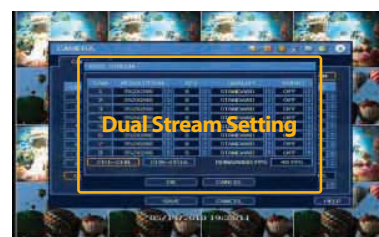
Integrated Network Solution

- CMS : Max 180 Ch Monitoring with 5 Monitors supported
- RMS : 16 Ch Monitoring with AVI Backup & Watermark
- Mobile Viewer : WAP connection by any kinds of cellular Phone
iPhone & Black Berry & Android & Win Mobile Phone
- Web Viewer : Built-In Web Server

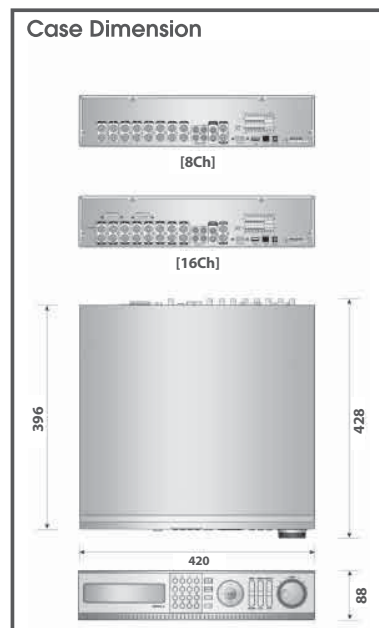


Network Main Features

- **Dual-Stream Function (Recording & Transmission)**
Simultaneous dual-stream images with adjustable fps and resolution & image quality
- **Network Bandwidth Control**
Network bandwidth ranging from 25 Kbps up to 100 Mbps can be designated by just one mouse click.
- **Scheduled Remote Backup**
User can remotely backup the massive volume of data according to scheduled program at CMS software.
- **NTP Server**
DVR can be synchronized based on NTP server ("pool.ntp.org").



MODEL	KE-8004MX (4 Ch)	KE-8008MX (8 Ch)	KE-8016SX (16 Ch)
HDD Bay	3 x SATA HDD or 2 x SATA HDD & 1 x DVD	4 x SATA HDD or 3 x SATA HDD & 1 x DVD	
Video	Input	4 ch	8 ch
	Loop-Out	Built-in	Built-in
Display Speed(NTSC/PAL)	120/100 fps	240/200 fps	480/400 fps
Video -Out (Monitor)	2 x Main Monitor (Composite & VGA) & 1 x Spot Monitor (Composite)		
Recording Speed (NTSC/PAL)	352x240/288(CIF)	120/100 fps	240/200 fps
	720x240/288(HalfD1)	120/100 fps	120/100 fps
	720x480/576(D1)	60/50 fps	60/50 fps
Recording Resolution	NTSC : 352x240, 720x240, 720x480, PAL : 352x288, 720x288, 720x576		
Recording Mode	Continuous, Scheduled, Sensor-Activated & Motion Detection Recording Pre & Post Alarm Recording, Emergency Recording, Quick Backup		
Playback & Search	Playback Channel	1, 4, 9 & 16 Ch Real-Time Playback at CIF	
	Function	Intelli-Search by Time Bar, Calendar (Date & Time) and Event/system Search	
Audio Input / Output	4 Ch Input / 1 Ch Output		
Alarm Input / Relay Output	4 ch / 4 ch	8 ch / 4 ch	16 ch / 4 ch
P/T/Z Control	Pan/Tilt/Zoom/Focus/Iris & Virtual Joy Stick		
LAN	10/100 Base-Tx Ethernet (RJ45) – Fixed IP, DHCP & DDNS		
Backup Device	USB Memory Stick & DVD		
System Operation	Front Button, IR Remote Controller, USB Mouse, Keyboard (Option)		
Power	12V x 5A D/C		12V x 7A D/C
Certification	CE & FCC & MIC & WEEE, RoHS		



(*) Specification is subject to change without prior notice