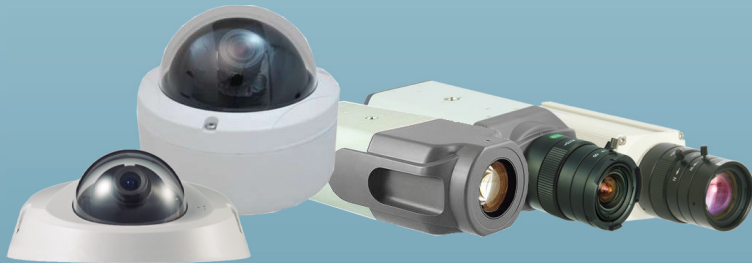




END-TO-END
IP VIDEO
SOLUTIONS

InSight Series

MULTI-MEGAPIXEL IP NETWORK CAMERA



From Sentry 360 Security, the market and technology leaders in IP surveillance:

- Outputs up to 11 Megapixel, or 2600+ lines of resolution
- 10x Optical Zoom Camera with 4 Times More Resolution
- Internal/External Events trigger NVR / Email / FTP
- Available in 1.3, 3.1, 5 and 11 Megapixel
- Power over Ethernet
- Integrated Video Motion Detection
- Security / password protection
- Optional true Day/Night functionality
- DC Auto Iris Support
- Built-in Web Server

IS-IP100/120

- 1280 x 960 resolution
- Dual-Stream MJPEG & MPEG-4
- CCD or CMOS
- True day/night option

IS-IP190

- 1280 x 960 resolution
- 10x Optical Zoom
- Dual-Stream MJPEG & MPEG-4
- CCD Imager

IS-IP300

- 2048 x 1536 resolution
- 10 fps MJPEG
- 1/2" sensor format
- 1.5 lux
- True day/night option

IS-IP500

- 2560 x 1920 resolution
- 6 fps MJPEG
- 1/2.5" sensor format
- 2.0 lux
- True day/night option

IS-DM160

- 1280 x 960 resolution
- Mini Vandal Dome
- Dual-Stream MJPEG & MPEG-4
- IP 66 Rated



InSight
vs
Analog



1-800-261-2707

1-630-355-3440

WWW.SENTRY360.COM

ip
t
h
g
i
s
n

INSIGHT SPECIFICATIONS



Model Number	IS-DM100/120 IS-DM160	IS-IP100/120 IS-IP190	IS-IP300	IS-IP500	IS-IP1100
General					
Interface	Built in web server and network interface		Built in web server and network interface		
Motion Detection	Programmable video motion detection		Programmable video motion detection		
Alarm Interface	Programmable ports for alarm input/output		Programmable ports for alarm input/output		
Operational					
Luminance	0.03 lux @ F1.4 (IS-DM100) 0.005 lux @ F1.2 (IS-IP100) 0.1 lux @ F2.0 (IS-DM160)	0.015 lux @ F1.4 (IS-DM120) 0.001 lux @ F1.2 (IS-IP120) 0.001 lux @ F1.6 (IS-IP190)	1.5 lux @ F1.0 (IS-IP300) 2.0 lux @ F1.0 (IS-IP500) 0.1 lux @ F1.0 (IS-IP1100)		
Image					
Format	Dual-Stream Motion-JPEG and MPEG-4 video		JPEG still images and Motion-JPEG video		
Compression	High speed hardware-based compression		High speed hardware-based compression		
Mechanical					
Lens Mount	IS-DM100/120: 3.3-12 mm IS-DM160: 3.6 mm IS-IP100/120: CS type (Lens not included) IS-IP190: 4.8 - 48mm		IS-IP300: IS-IP500: IS-IP1100:	CS type (Lens not included) CS type (Lens not included) SLR Canon EF Bayonet-Mount	
Environmental					
Operating Temp.	0 to +50 Degrees Celsius		-10 to +50 Degrees Celsius		
Humidity	10% to 90% relative, non-condensing		5% to 95% relative, non-condensing		
Regulatory					
Emissions	FCC: Part 15, Class B		FCC: Part 15, Class B		
Certification	CE		CE		
Safety			UL Listed		

Model	Imager	Full Resolution	Medium Resolution
IS-DM100/120	1280 x 960	15 fps	30 fps
IS-DM160	1280 x 960	15 fps	30 fps
IS-IP100/120	1280 x 960	15 fps	30 fps
IS-IP190	1280 x 960	15 fps	30 fps
IS-IP300	2048 x 1536	10 fps	30 fps
IS-IP500	2560 x 1920	6 fps	26 fps
IS-IP1100	4000 x 2656	3 fps	8 fps



Data subject to change without notice.