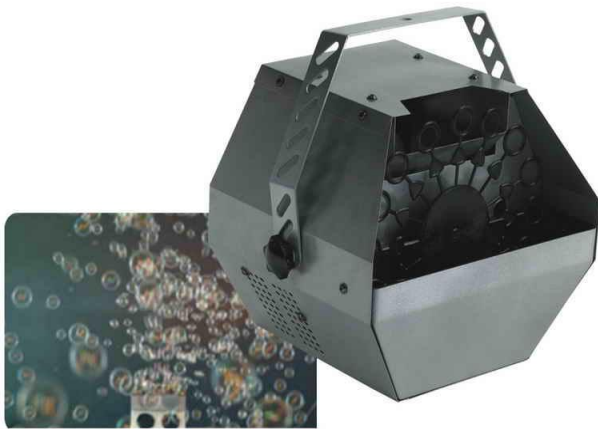




## Big Hubble-Bubble Machine

**YR-182B**

- ◆ Voltage: AC110V-130V, 220V-240V (Optional)
- ◆ Frequency: 50/60Hz (Optional)
- ◆ Jet distance: 2-3m
- ◆ Feature: special effect on stage, remote control covering 100m, run by double fans, power wind leads to numerous bubbles rising up, color ful bubbles, fit for performance place
- ◆ Turning speed :5 wheels/min
- ◆ Dimension(cm) 48\*38.2\*48



## Hubble-Bubble Machine

**YR-182A**

- ◆ Hubble-bubble machine
- ◆ Voltage: AC110V-130V, 220V-240V (Optional)
- ◆ Frequency: 50/60Hz (Optional)
- ◆ Jet distance: 1m
- ◆ Feature: special effect on stages, run by single fan, power wind leads to numerous bubble rising up, fit for performance place
- ◆ Turning speed: 5wheels/min
- ◆ Dimension(cm): 20.5\*23.5\*21.5
- ◆ G.w: 2.8kg



## Snowflake Machine

**YR-XH**

- ◆ Voltage: AC110V-130V, 220V-240V (Optional)
- ◆ Frequency: 50/60HZ
- ◆ special effect on stages, adopting the latest prescription, producing numerous snow flakes, flying in the sky, creation romantic feelings. Spouting in the large amount and with strong force, long shooting distance, little noise medicine Canteen
- ◆ Capacity: 5 liter
- ◆ Dimension(cm) 59\*38\*38
- ◆ G.W: 6.75kg



## Smoke Machine

**YR-1500**

- ◆ Voltage: AC110V-130V, 220V-240V (Optional)
- ◆ Frequency: 50/60HZ (optional)
- ◆ Power: 1500w
- ◆ Preheat Time: 8min
- ◆ Fog Production: 15000CUFT/MIN
- ◆ Jet distance: 8m
- ◆ Tank Capacity: 5 liter
- ◆ Function: smoke output adjustable by controller, with DMX512 signal
- ◆ Dimension(cm): 52\*32\*25
- ◆ G.W: 6.5kg