

BEATISER HUMMER H2



Detailed Product Description

The H2 is a 3-way full range line array module in a computer optimized enclosure. The H2 houses twin volumetrically loaded 12" cone drivers, twin 8" midrange cone drivers, and two celestion high frequency compression drivers. The enclosure is constructed of durable plywood-substantial laminate, dadoed for strength and durability. Modules ship with an advanced integrated rigging system with all necessary rigging hardware self-contained to the enclosure.

This system allows an array to be flown quickly and easily, or in the case where rigging is not appropriate, this same rigging system allows the cells to form ground stack arrays. Perforated steel is employed for frontal protection of the loud speaker complement.

MODEL Hummer H2

·FREQUENCY RESPONSE(± 3 dB):70Hz-18KHz

·HORIZONTAL COVERAGE (-6)dB:100°

·VERTICAL COVERAGE(-6)dB: varies, depending on array length and configuration.

For a single loudspeaker

COMPONENTS

·LOW:YZ-1208 2×12in(315mm)/ 4.0(100mm)

·MID:YZ-8005 2×8in(212mm)/ 2.0(50mm)

·TWEETER: H441-2 2×1in(25mm)/1.75in(44.4mm)

·POWER HANDLING

LOW:800W , MID:300W , TWEETER:100W

·SENSITIVITY()

LOW:102Db , MID:100dB , TWEETER:103dB

·MAXIMUM SPL

LOW:132dB , MID:127dB , TWEETER:125dB

·IMPEDANCE: LF4ohm MF 4ohm HF 4ohm

·CONNECTOR:1×6 core cable

·WEIGHT: 72Kg

·DIMENSION(W×H×D mm/pcs): 1332×310×580

·Enclosure material: 15mm 25mm plywood

·Finish:Textured black paint

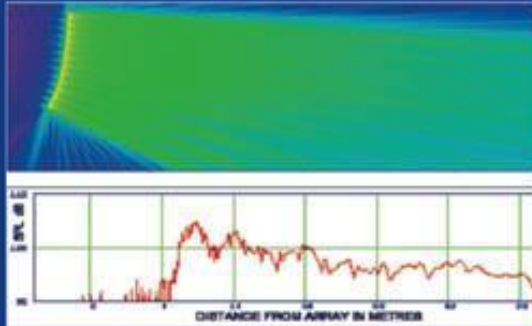
·Grille: Black perforated steel

·Suspension system:Proprietary rigging system

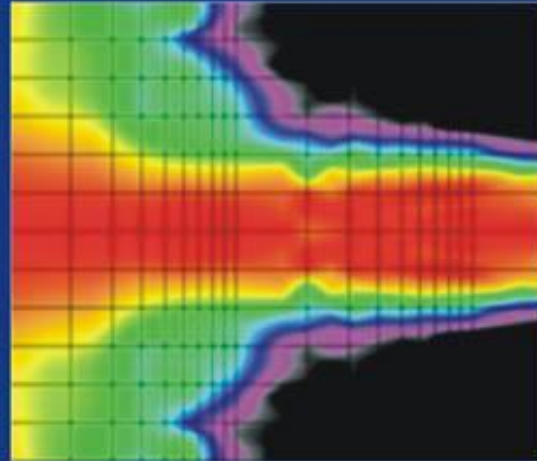
·Hummer H2:1382x630x515mm/0.45CBM/PCS

HUMMER SPECIFICATION

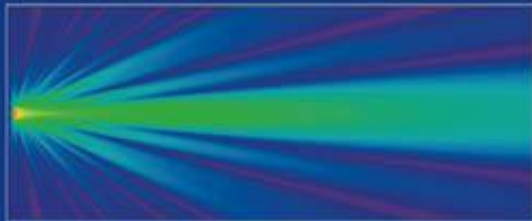
L I N E A R R A Y S Y S T E M



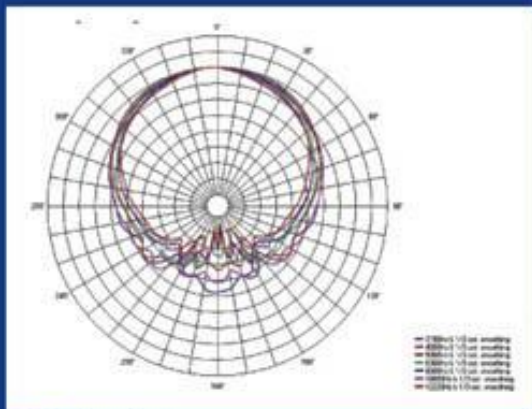
■ Irregular coverage from a J-Shaped Array



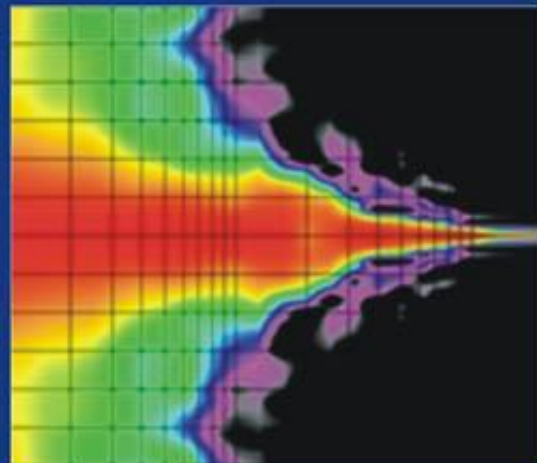
■ HORIZONTAL DISPERSION CHARACTERISTIC



■ Three tightly arrayed low curvature horns at 8kHz



■ Polar plot



■ VERTICAL DISPERSION CHARACTERISTICS ROTATED HORN

HUMMER CONFIGURATION

L I N E A R R A Y S Y S T E M



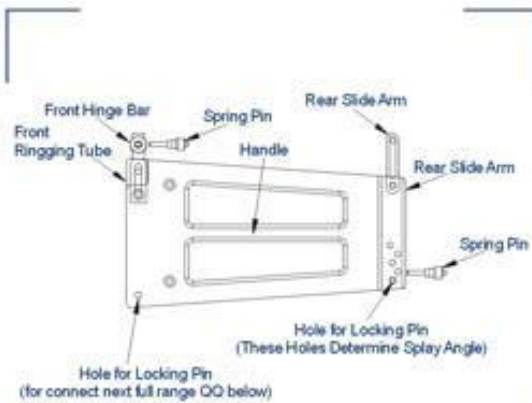
Front

Right

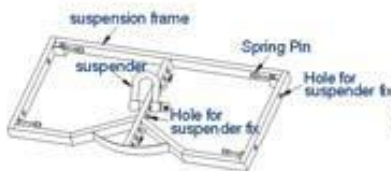


Top

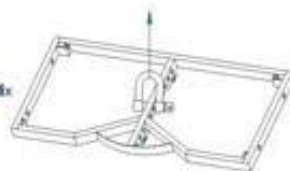
H2 CONFIGURATION



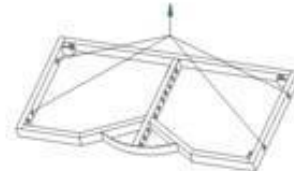
H2 BREAK DOWN OF HANGING



SUSPENSION FRAME



SOLUTION 1



SOLUTION 2

HUMMER

HANGING

L I N E A R R A Y S Y S T E M

>>FLG 1



>>FLG 1



>>FLG 1



>>FLG 1



>>FLG 1



HANGING SYSTEM

The hanging system is made up of two parts, including anterior hinge bar in slot and posterior metal arm. There are 2 pcs hinge bar and slot lie in the two side of a unit. And the hinge bar is conveniently hidden in slot, when take out the spring bar, the hinge bar will spring out from the slot, using the spring bar will fix the hinge bar and connect the next near loudspeaker.

The back of hanging system comprises 2 pcs slot and metal arm lie in tow side. These metal arms are dug in slot. Unrig the spring bar and let metal arm connect the slot in the angle that you need, fix with spring bar, so the step of hanging system finish complete.



Step 1: Move the line array unit out of the case.

Step 2: Pull out the spring bar in the front side and the hinge bar will spring out.

Step 3: Move the full range unit under the suspension frame.

Step 4: Set the hold of the front hinge bar in line with the hole of the suspension frame then insert the spring bar into both holes to connect them.



Step 5: Pull out the metal arm at the back of the full range unit and lean the suspension frame clockwise until the hole of the frame be in line with the hole of the tongue.

Step 6, fix and match the hole in rear suspension and the metal arm, insert the spring bar and fix it.

Step 7: Insert the speakon cable into the full range unit now the first unit have been fully connected. (The angle of the unit is 0°)

Step 8: Raise (500mm) the suspension frame up in place, then move another full range unit from the case and set it under the first unit.



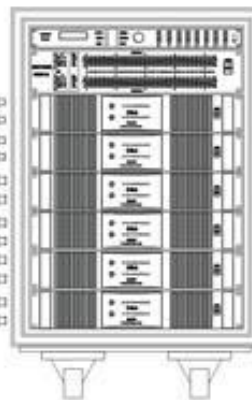
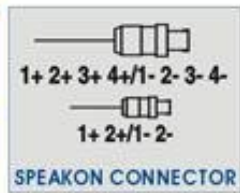
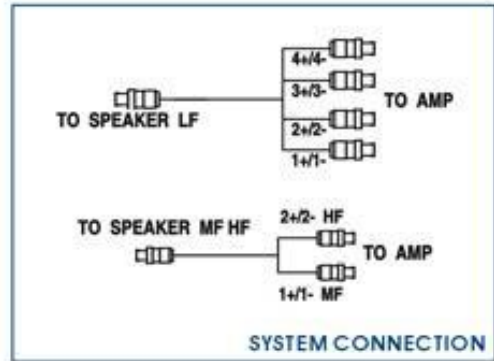
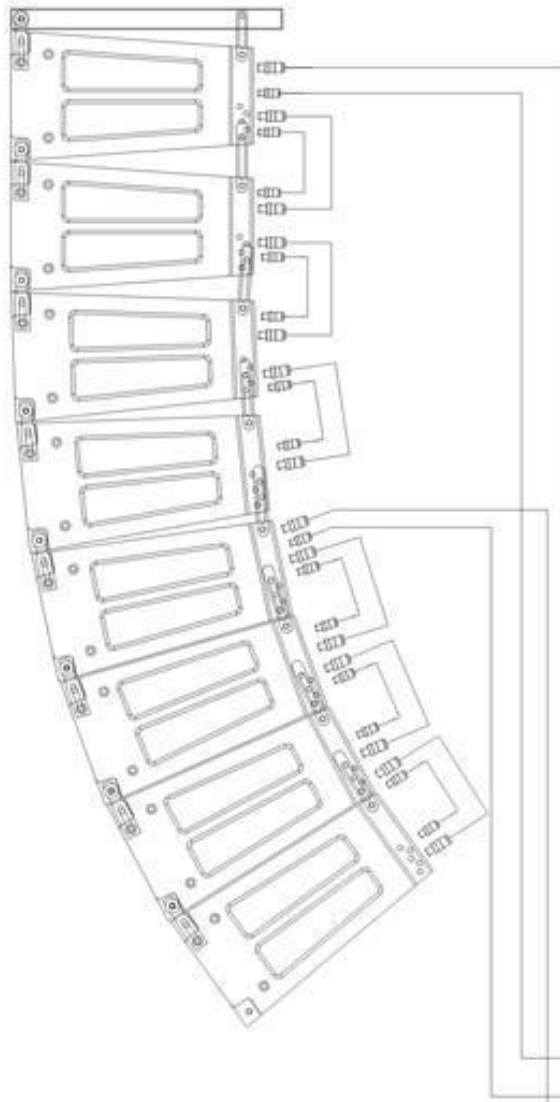
Step 9:a. Put out the hinge bar of the second unit and makes its hole in line with the front rigging hole of the first unit. Then insert the spring bar into the holes.

b. Insert the sliding arm at the back of the first unit into the metal gap at the back of the second unit Set the wanted connect holes into a line and insert the spring bar.

Step 10: Repeat the above step 7,8 and 9 to rig the rest units until the whole array is rigging up. (The vertical angle can be adjusted to different venues.)

HUMMER CONNECTION

L I N E A R R A Y S Y S T E M



BEATISER
PROFESSIONAL AUDIO SYSTEM