

# BEATISER QQ 8



## Detailed Product Description

The QQ8 of BEATISER compact array loudspeaker brings numerous advantages to mid-sized venues that require tight vertical pattern control with long throw. The QQ8 is designed specifically for vertical curvilinear arrays of up to 16 cabinets having 0- to 10-degree splay between adjacent units.

The QQ8 extends the concept to vertical arraying, enabling flexibility to tailor vertical coverage by varying the number and splay of cabinets in the array while maintaining a constant 90 degrees of horizontal coverage.

### MODEL QQ8

- FREQUENCY RESPONSE( $\pm 3$ dB):70Hz-19KHz
- HORIZONTAL COVERAGE (-6)dB:120°
- VERTICAL COVERAGE(-6)dB: varies, depending on array length and configuration, For a single loudspeaker,

#### COMPONENTS

- MID:DY-A8509 2×8in(212mm)/ 2.0(50mm)
- TWEETER:DE250-8 1×1in(25mm)/1.75in(44.4mm)
- POWER HANDLING

MID:300W , TWEETER:50W

#### ·SENSITIVITY(1W@1M)

MID:100dB , TWEETER:101dB

#### ·MAXIMUM SPL

MID:138dB , TWEETER:122dB

IMPEDANCE:MF 8ohm HF 8ohm

#### ·CONNECTOR:1×2 core cable

#### ·WEIGHT:21Kg

#### ·DIMENSION(W×H×D mm/pcs): 745×381×236

#### ·Enclosure material: 15mm 25mm plywood

#### ·Finish: Textured black paint

#### ·Grille: Black perforated steel

#### ·Suspension system:Proprietary rigging system

#### ·QQ-8:852x433x680mm/0.25CBM/2PCS

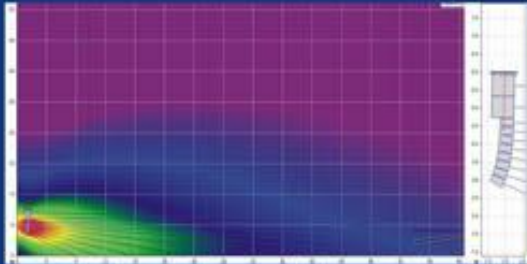
### MODEL QQ12

- COMPONENTS:YZ-1208
- 2×12in(312mm)/4in(100mm)
- FREQUENCY RESPONSE( $\pm 3$ dB):50Hz-300Hz
- POWER HANDLING:800W
- SENSITIVITY(
- MAXIMUM SPL:132dB
- CROSSOVER:300Hz/1.8KHz
- IMPEDANCE:4ohm
- WEIGHT:44Kg
- DIMENSION(W×H×D mm/pcs): 532×572×305
- Enclosure material: 15mm 18mm plywood
- Finish: Textured black paint
- Grille: Black perforated steel
- Suspension system:Proprietary rigging system
- QQ-12:852x380x850mm/0.28CBM/PCS

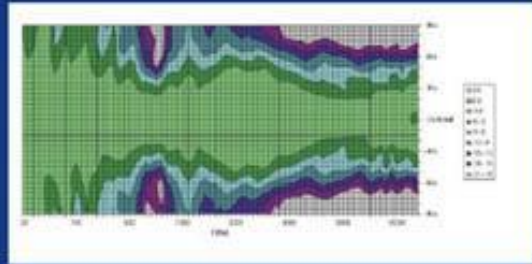
# QQ

# SPECIFICATION

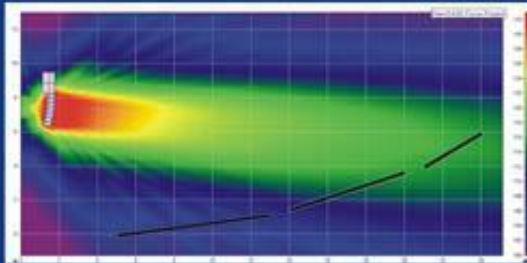
L I N E   A R R A Y   S Y S T E M



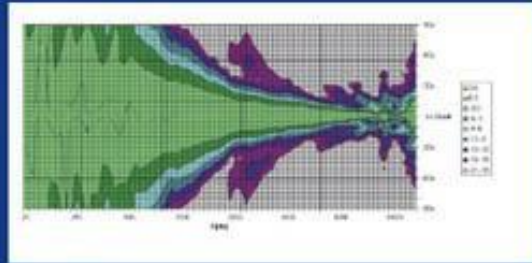
■ Map 1



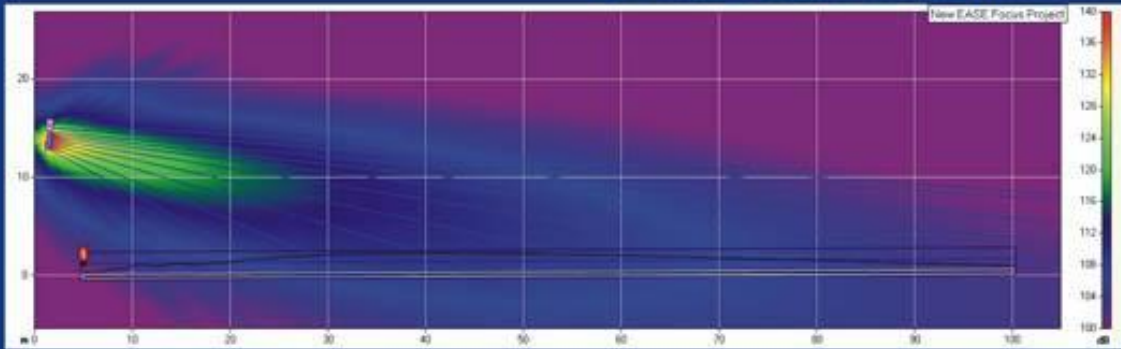
■ HORIZONTAL DISPERSION CHARACTERISTIC



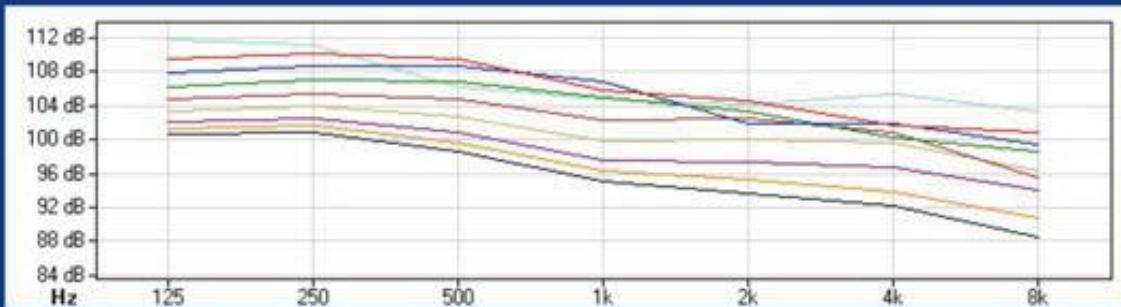
■ Map 2



■ VERTICAL DISPERSION CHARACTERISTICS ROTATED HORN



■ Map 3



■ Map 4

# QQ

# HANGING

L I N E   A R R A Y   S Y S T E M

>>FLG 1



>>FLG 2



>>FLG 4



>>FLG 4



>>FLG 5



## HANGING SYSTEM

The hanging system is made up of two parts, including the slot and hinge bar. There are 2 pcs hinge bar and slot lie in the two side of a unit. And the hinge bar is conveniently hidden in slot, when take out the spring bar, the hinge bar will spring out from the slot, using the spring bar will fix the hinge bar and connect the next near loudspeaker.



The back of hanging system comprises 2 pcs slot and metal arm lie in tow side. These metal arms are dug in slot. Unrig the spring bar and let metal arm connect the slot in the angle that you need, fix with spring bar, so the step of hanging system finish complete.

**Step 1:** Move the line array unit out of the case.

**Step 2:** Pull out the spring bar in the front side and the hinge bar will spring out.



**Step 3:** Move the full range unit under the suspension frame.

**Step 4:** Set the hold of the front hinge bar in line with the hole of the suspension frame then insert the spring bar into both holes to connect them.

**Step 5:** Pull out the metal arm at the back of the full range unit and lean the suspension frame clockwise until the hole of the frame be in line with the hole of the tongue.

**Step 6:** fix and match the hole in rear suspension and the metal arm, insert the spring bar and fix it.



**Step 7:** Insert the speaker cable into the full range unit now the first unit have been fully connected. (The angle of the unit is 0° )

**Step 8:** Raise the suspension frame up in place, then move another full range unit from the case and set it under the first unit.

**Step 9:**a. Put out the hinge bar of the second unit and makes its hole in line with the front rigging hole of the first unit. Then insert the spring bar into the holes.



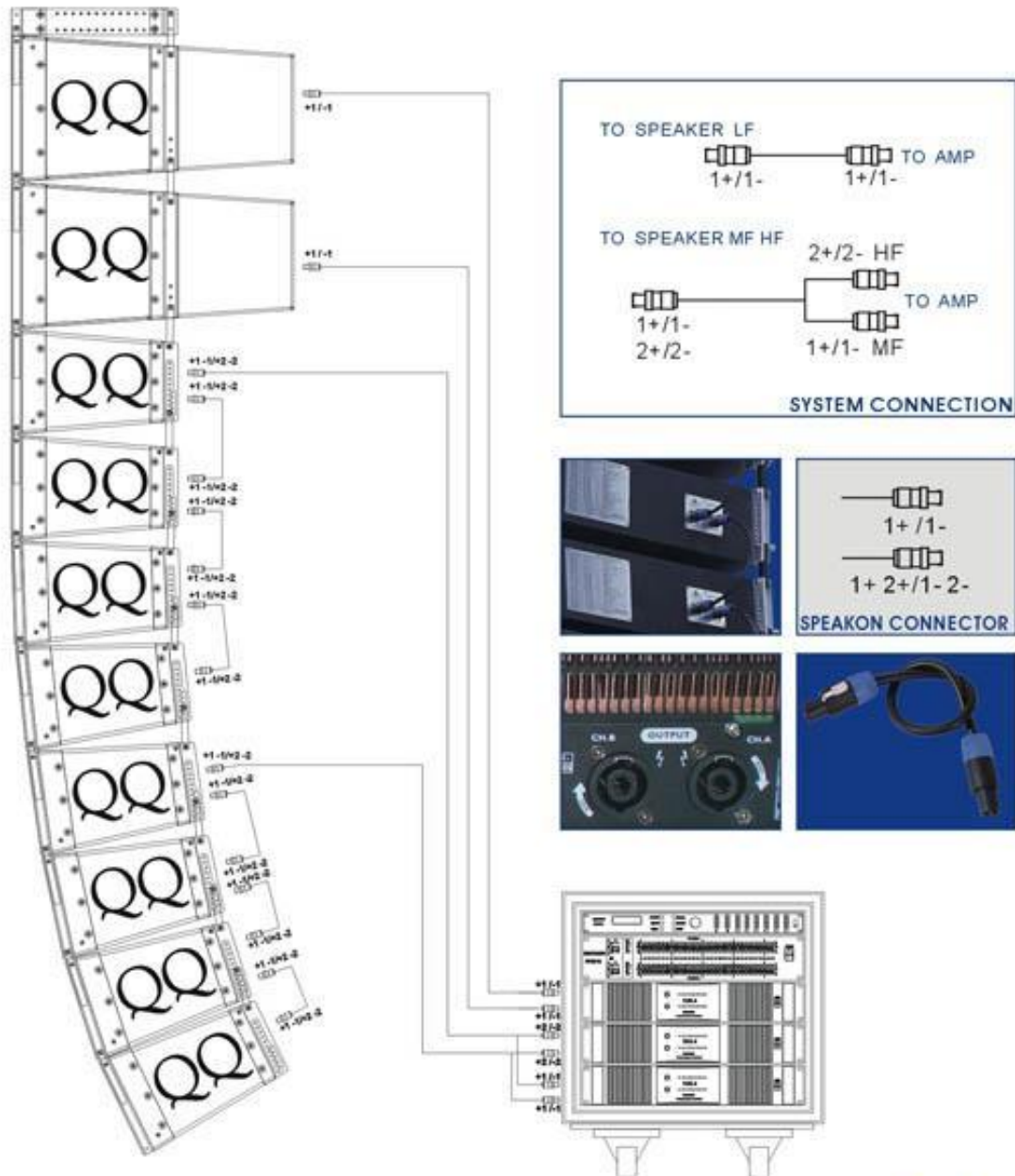
b. Insert the sliding arm at the back of the first unit into the metal gap at the back of the second unit. Set the wanted connect holes into a line and insert the spring bar.

**Step 10:** Repeat the above step 7,8 and 9 to rig the rest units until the whole array is rigging up. (The vertical angle can be adjusted to different venues.)

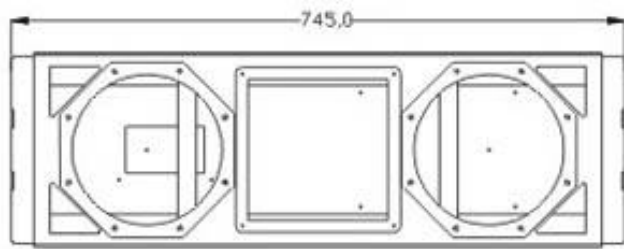
# QQ

# CONNECTION

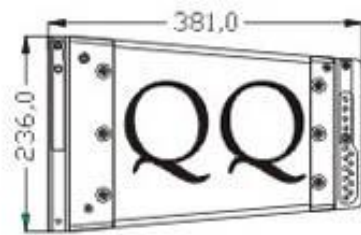
L I N E A R R A Y S Y S T E M



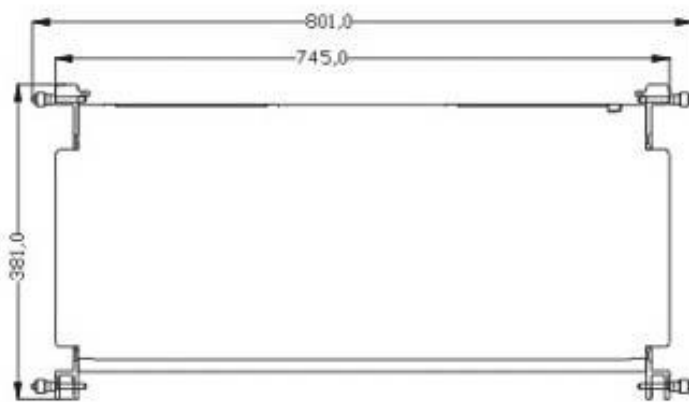
**BEATISER**  
PROFESSIONAL AUDIO SYSTEM



Front



Right



Top

**QQ8** CONFIGURATION