

# BEATISER SMART 6



## Detailed Product Description

The SMART6 Line Array System is suitable for applications that require fast set-up, good sound, long throw and predictable directivity. Developed for the raising demands of rental companies and permanent installations in small to medium venues.

### MODEL SMART- 6

- FREQUENCY RESPONSE( $\pm 3$ dB):75Hz-18KHz
- HORIZONTAL COVERAGE (-6)dB:90°
- VERTICAL COVERAGE(-6)dB:varies,depending on array length and configuration,For a single loudspeaker,

#### COMPONENTS

- MID:BS-6CC02 2×6in(165mm)/ 2.0(50mm)
- TWEETER:H441-2 1×1in(25mm)/1.75in(44mm)
- POWER HANDLING  
MID:150W , TWEETER:50W
- SENSITIVITY(1W@1M)  
MID:97dB , TWEETER:102dB
- MAXIMUM SPL  
MID:122dB , TWEETER:121dB

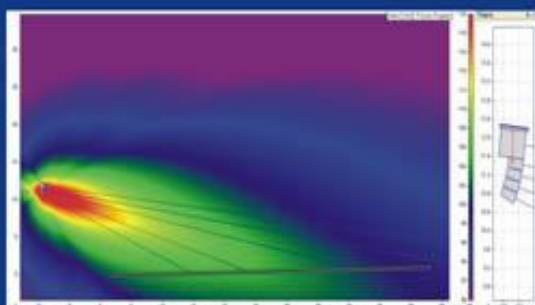
- IMPEDANCE:MF 16 ohm HF 8ohm
- CONNECTOR:1×4 core cable
- WEIGHT:13Kg
- DIMENSION(W×H×D mm/pcs): 562×195×308
- Enclosure material: 15mm 18mm plywood
- Finish: Textured black paint
- Grille: Black perforated steel
- Suspension system:Proprietary rigging system
- SMART- 6 :880\*360\*1325/0.42cbm/4pcs

### MODEL SMART- 12 Subwoofer

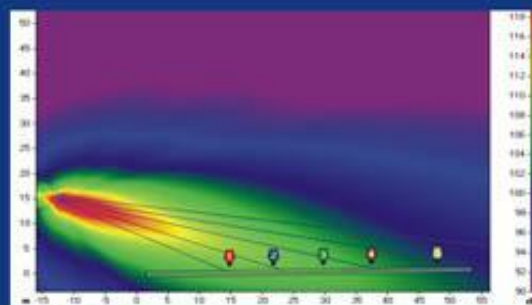
- COMPONENTS:YZ-1208
- 2×12in(315mm)/4in(100mm)
- FREQUENCY RESPONSE( $\pm 3$ dB):50Hz-300Hz
- POWER HANDLING:800W
- SENSITIVITY(  
·MAXIMUM SPL:140dB
- CROSSOVER:250Hz/1.9KHz
- IMPEDANCE:4ohm
- WEIGHT:57Kg
- DIMENSION(W×H×D mm/pcs): 578×695×473
- Enclosure material: 15mm 18mm plywood
- Finish: Textured black paint
- Grille: Black perforated steel
- Suspension system:Proprietary rigging system
- SMART- 12:745\*690\*715mm/0.37cbm/pcs

# SMART SPECIFICATION

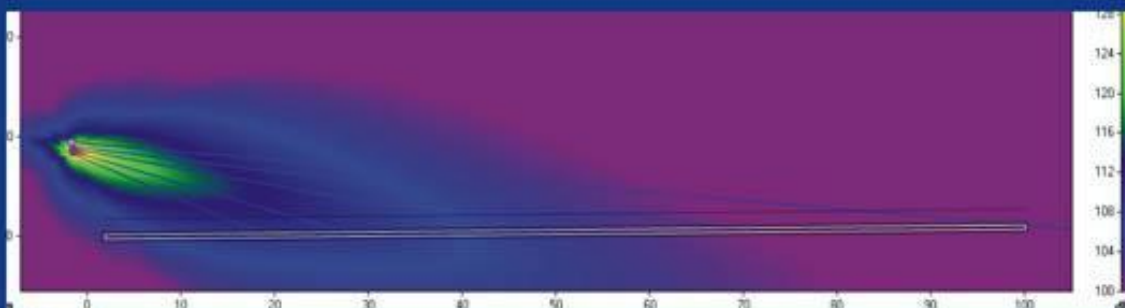
L I N E A R R A Y S Y S T E M



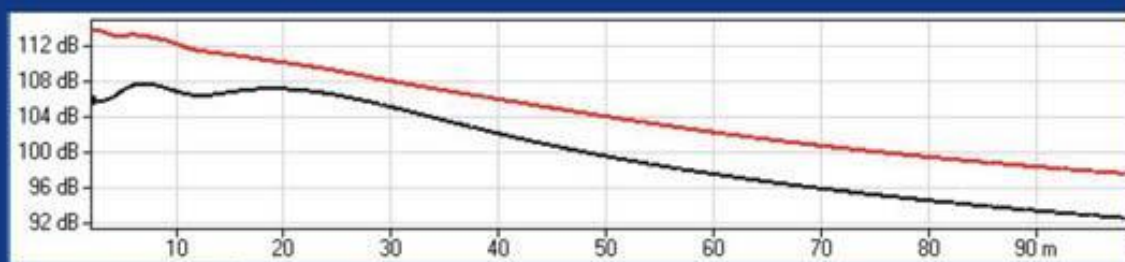
■ Map 1



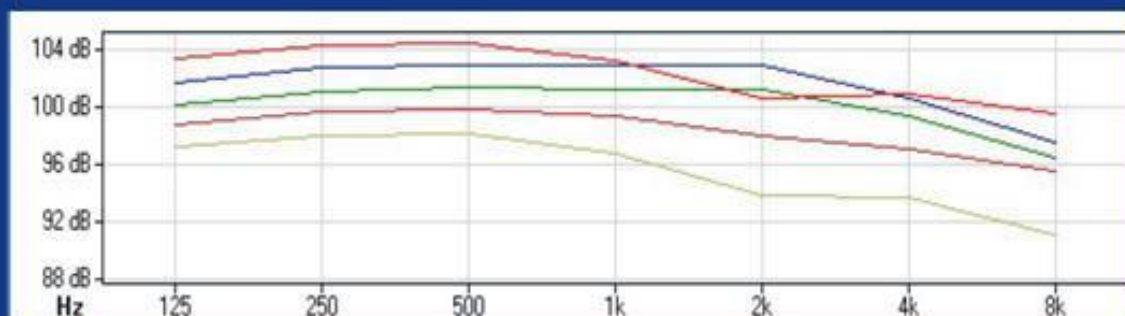
■ Map 2



■ Map 3



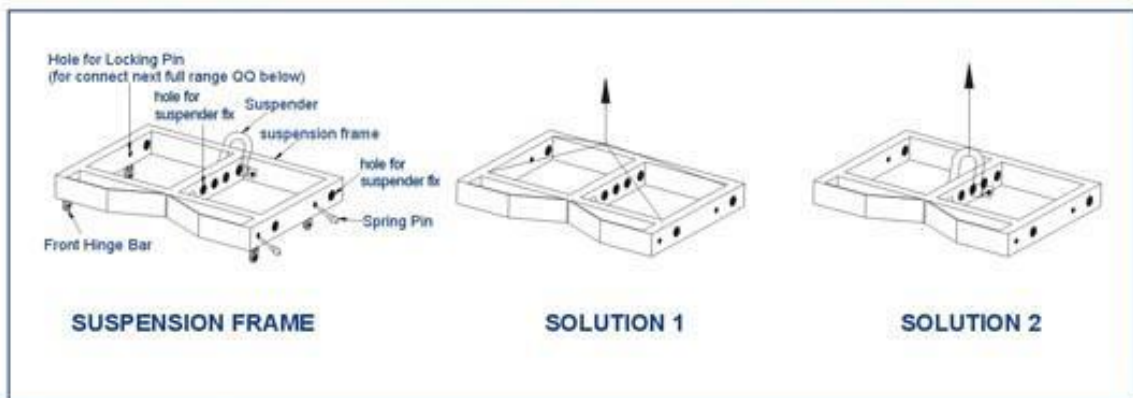
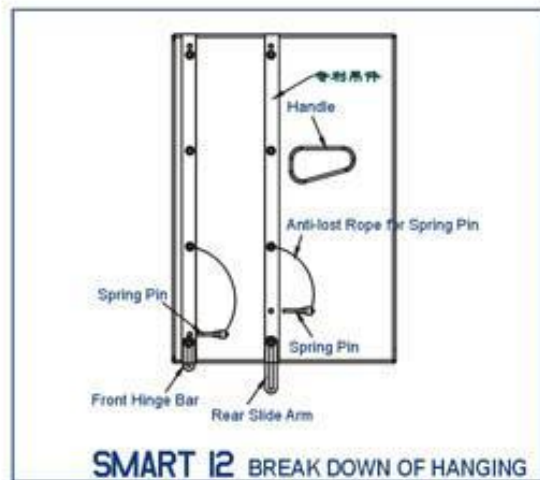
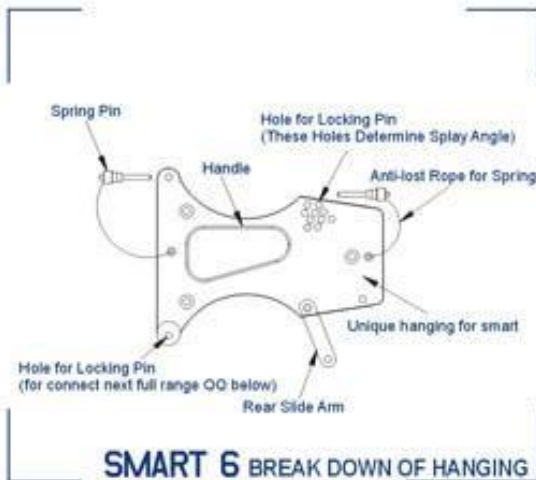
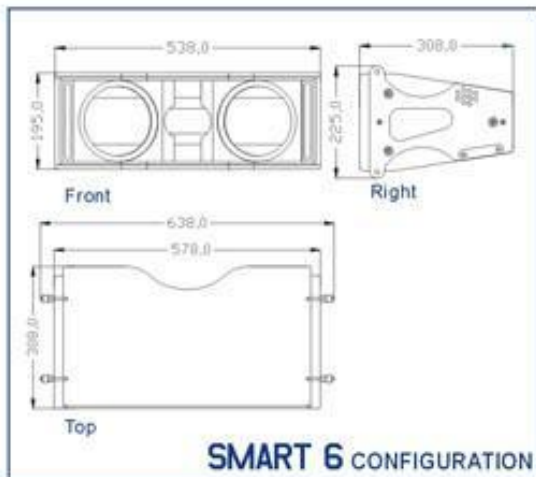
■ Map 4



■ Map 5

# SMART CONFIGURATION

LINE ARRAY SYSTEM



# SMART

# HANGING

L I N E   A R R A Y   S Y S T E M

>>FLG 1



>>FLG 6



>>FLG 2



>>FLG 3



>>FLG 5



>>FLG 4



## HANGING SYSTEM

The hanging system are make up of two parts, including the SMART12 in the top and SMART6 in the bottom. There are 4 pcs slot lie in the two side of a unit. And the hinge bar is conveniently hidden in slot, when take out the pin, the hinge bar will spring out from the slot, using the pin will fix the hinge bar and connect the next near loudspeaker.



The hanging system of SMART6 comprise slot and hinge bar, there still have a slot with a hinge bar, that located inner of the hanging system, unrig the pin and let hinge bar connect the slot in the angle that you need, fix with pin, so the step of hanging system finish complete.

**Step 1:** Move the line array unit out of the case.

**Step 2:** Pull out the rigging pin in the front side and the hinge bar will spring out



**Step 3:** Move the full range unit under the suspension frame.

**Step 4:** Set the hold of the front hinge bar in line with the hole of the suspension frame then insert the rigging pin into both holes to connect them.

**Step 5:** Pull out the slide arm at the back of the full range unit and lean the suspension frame clockwise until the hole of the frame be in line with the hole of the tongue.

**Step 6:** fix and match the hole in rear suspension and the slide arm, insert the pin and fix it.



**Step 7:** Insert the speakon cable into the full range unit now the first unit have been fully connected. (The angle of the unit is 0° )

**Step 8:** Raise the suspension frame up in place, then move another full range unit from the case and set it under the first unit.

**Step 9:a.** Put out the hinge bar of the second unit and makes its hole in line with the front rigging hole of the first unit. Then insert the pin into the holes.

**b.** Insert the sliding arm at the back of the first unit into the metal gap at the back of the second unit Set the wanted connect holes into a line and insert the rigging pin.

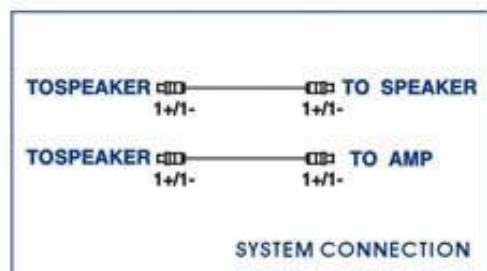
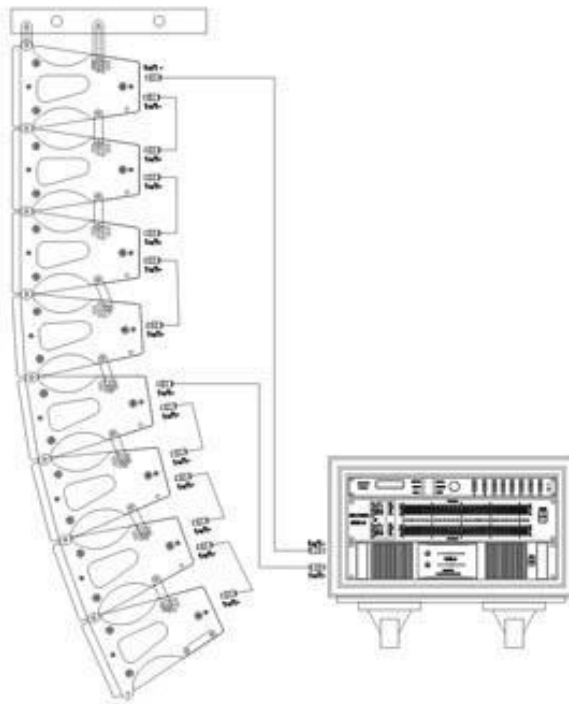
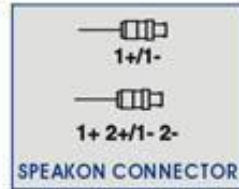
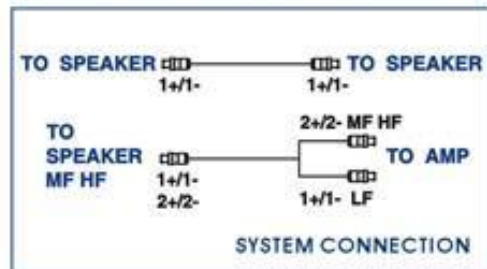
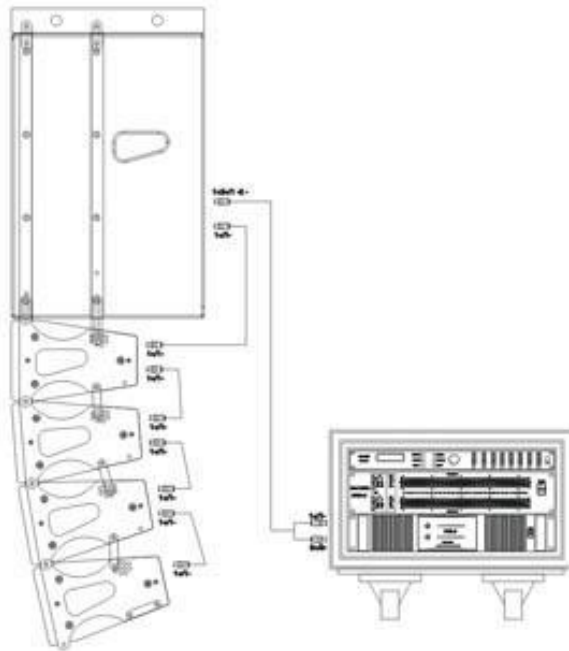


**Step 10:** Repeat the above step 7,8 and 9 to rig the rest units until the whole array is rigging up. (The vertical angle can be adjusted to different venues.)

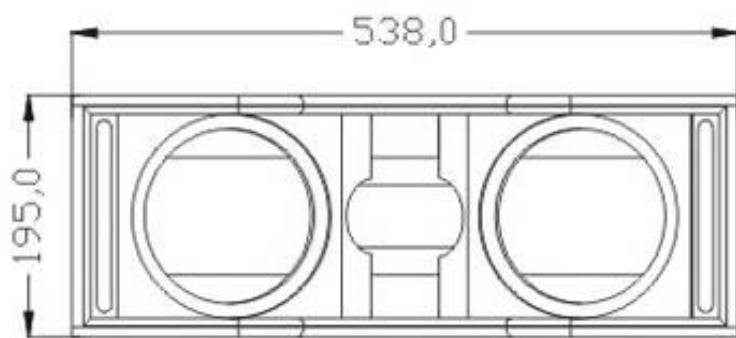
# SMART

# CONNECTION

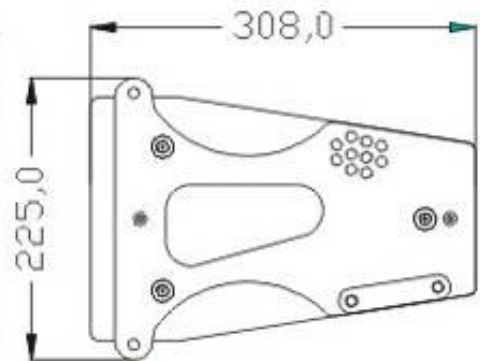
L I N E   A R R A Y   S Y S T E M



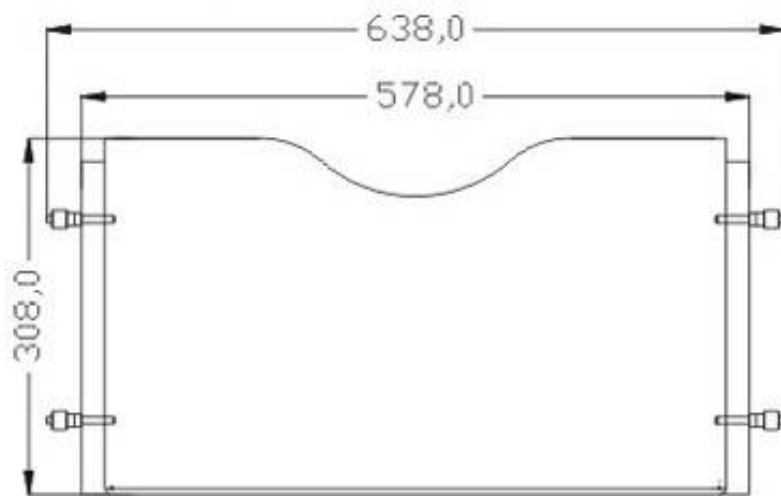
**BEATISER**  
PROFESSIONAL AUDIO SYSTEM



Front



Right



Top

## SMART 6 CONFIGURATION